

 4  2  2



Aldridge Park, *Winkfield Row*

OSBORNE HEATH

A four bedroom, two bathroom detached family home with a garage, driveway and no onward chain.

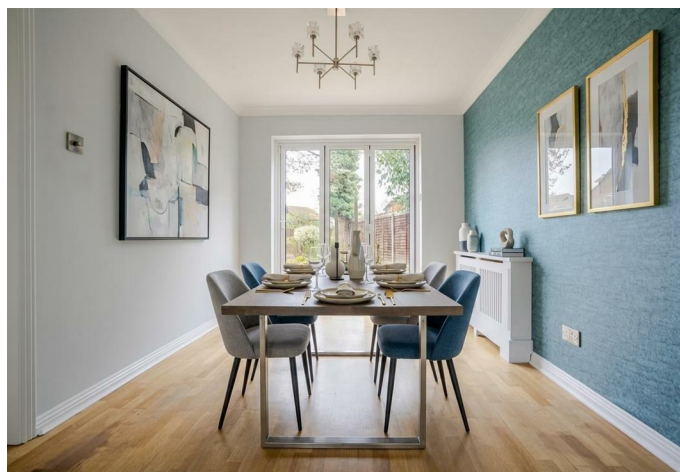
The ground floor has a large living room, dining room with access out to the garden, kitchen, and downstairs WC.

On the first floor is the principal bedroom with built-in wardrobes and an en suite shower room, three further bedrooms and a modern family bathroom.

Outside there is driveway parking for several cars and a garage where you can also access the rear garden from.

Aldridge Park is off Carnation Drive. Popular schools including St Marys, Ascot Heath, Ranelagh, Garth, St Joseph's and Cranbrook. The nearest train stations are Ascot and Martins Heron where services run to London, Reading and Guildford. By road Aldridge Park is convenient for the M3, M4, M25 and Heathrow Airport. Nearby points of interest include Ascot Racecourse, The Berkshire Golf Club, Coworth Park, Legoland, The Lexicon, Wentworth Club, Windsor Castle and Windsor Great Park.

EPC rating D. Council Tax band F.





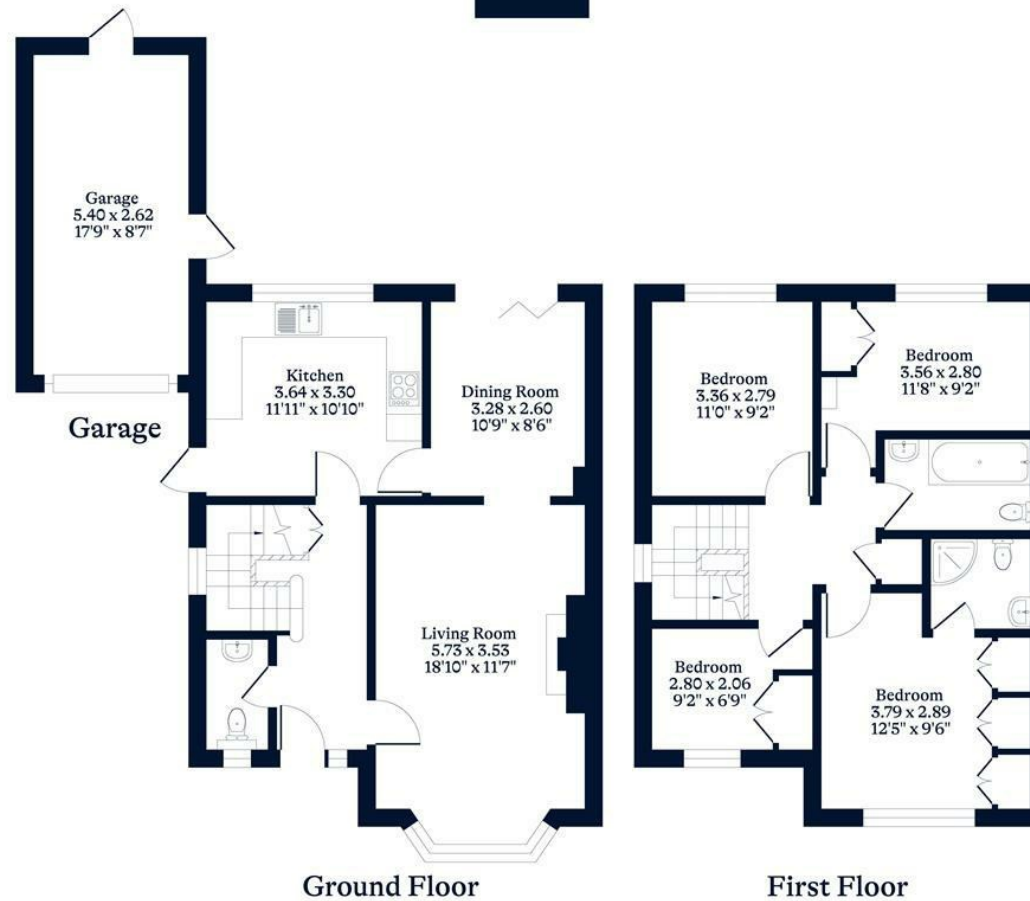
APPROXIMATE FLOOR AREA

House - 104.86 sq m - 1129 sq ft
Garage - 14.14 sq m - 152 sq ft
Total - 119.00 sq m - 1281 sq ft
(Gross Internal Area)

O
—
H

NOT TO SCALE

This plan is for illustration purposes only



OSBORNEHEATH.CO.UK

This floor plan has been created by Property Shoot Ltd following the RICS code of measuring and is for indicative guidance only. Whilst every attempt has been made to ensure the accuracy of the floor plan contained here, measurements of doors, windows and rooms are approximate and no responsibility is taken for any error, omission or misstatement. Details shown on this floorplan, including all measurements, areas and proportions cannot be guaranteed by either the provider or estate agency and should not be relied upon.

©PROPERTYSHOOT